



***Canadian Graduate and Professional
Student Survey***

2019 Results

Prepared by the Office of Institutional Research and Analysis

Section 1 – Project Summary

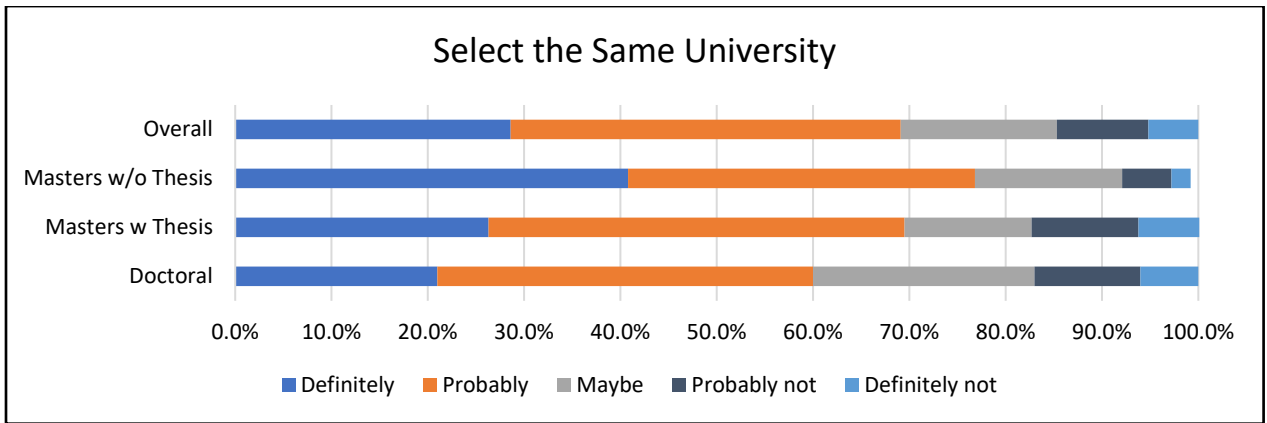
Project Summary	Totals
Number of students invited to participate	704
Responses received (partially or totally completed)	388
Response Rate	55.1%
Survey Open Date	25-Feb-19
Survey Close Date	23-Apr-19

Section 2 – Student Demographics

	Doctoral		Masters w Thesis		Masters w/o Thesis		Overall	
	Frequency	Count	Frequency	Count	Frequency	Count	Frequency	Count
Gender								
Male	62.7%	47	51.8%	74	35.7%	30	50.0%	151
Female	37.3%	28	45.5%	65	63.1%	53	48.3%	146
Another gender identity	0.0%	0	0.0%	0	0.0%	0	0.0%	0
Age								
<=25	17.3%	13	45.1%	64	15.7%	13	30.0%	90
>25	82.7%	62	54.9%	78	84.5%	70	69.9%	210
Marital Status								
Married	61.3%	46	35.0%	50	56.6%	36	47.5%	143
Single	38.7%	29	65.0%	93	43.4%	47	52.5%	158
Dependents								
None	72.0%	54	86.0%	123	63.4%	52	76.3%	229
1 or more	28.0%	21	14.0%	20	36.6%	30	23.7%	71
Citizenship								
Canadian/Permanent Residence	59.5%	22	82.4%	75	86.3%	44	78.8%	141
International	40.5%	15	17.6%	16	13.7%	7	21.2%	38
Academic Load								
Full-Time	87.0%	87	78.4%	149	39.8%	39	70.9%	275
Part-Time	13.0%	13	21.6%	41	60.2%	59	29.1%	113
Degree								
Social Sciences	18.4%	18	8.8%	16	0.0%	0	9.0%	34
Business/Management	3.1%	3	1.1%	2	2.0%	2	1.9%	7
Education	0.0%	0	9.3%	17	62.2%	61	20.6%	78
Engineering	51.0%	50	38.5%	70	24.5%	24	38.1%	144
Physical and Mathematical Sciences	14.3%	14	13.7%	25	0.0%	0	10.3%	39
Biological Sciences	11.2%	11	3.3%	6	0.0%	0	4.5%	17
Health Science	2.0%	2	25.3%	46	1.0%	1	13.0%	49
Arts & Culture	0.0%	0	0.0%	0	0.0%	0	0.0%	0
Finance/Mathematics/Computing	0.0%	0	0.0%	0	3.1%	3	0.8%	3
Other	0.0%	0	0.0%	0	7.7%	7	1.9%	7

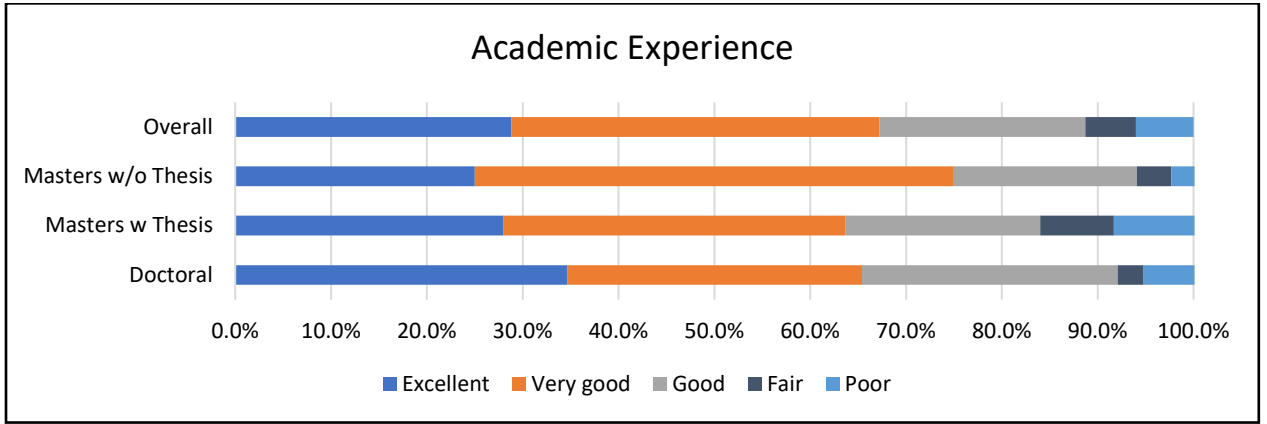
Section 3 – Overall Satisfaction

If you were to start your graduate/ professional career again, would you select this same university?

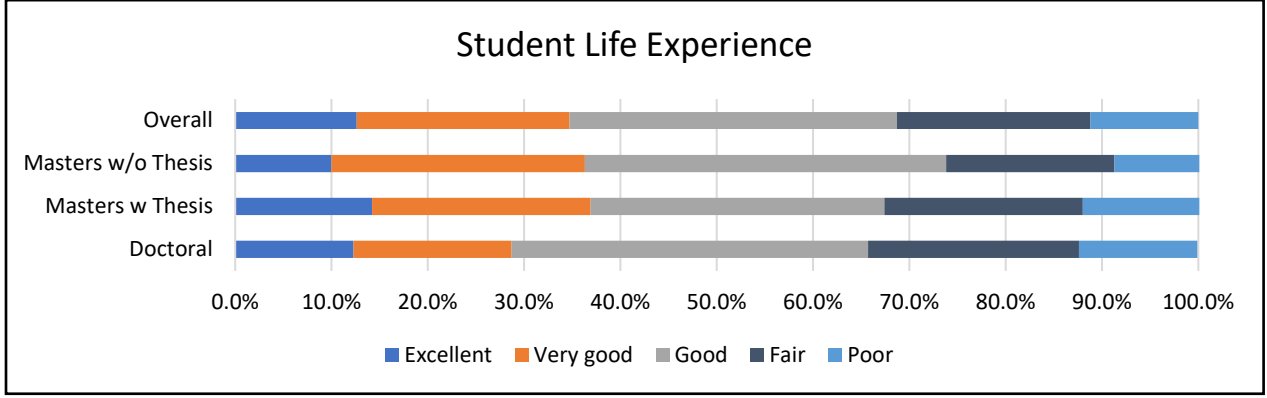


Overall, how would you rate the quality of:

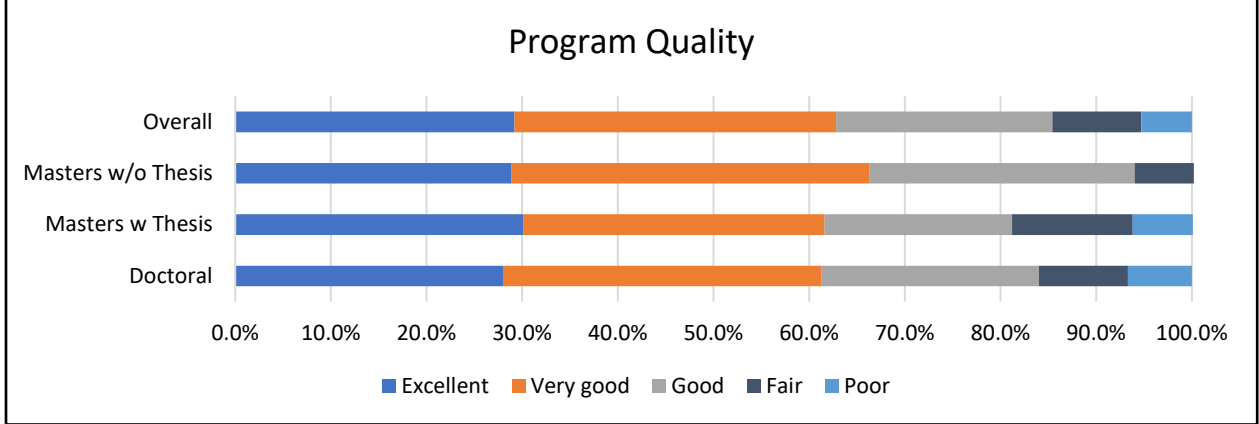
1) Your Academic Experience at this university?



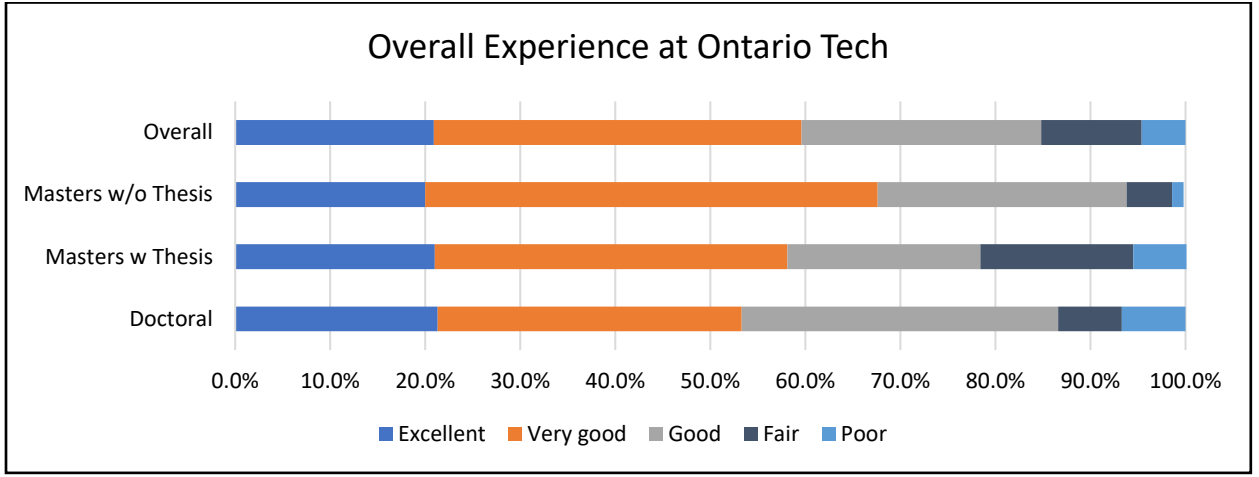
2) Your student life experience at this university?



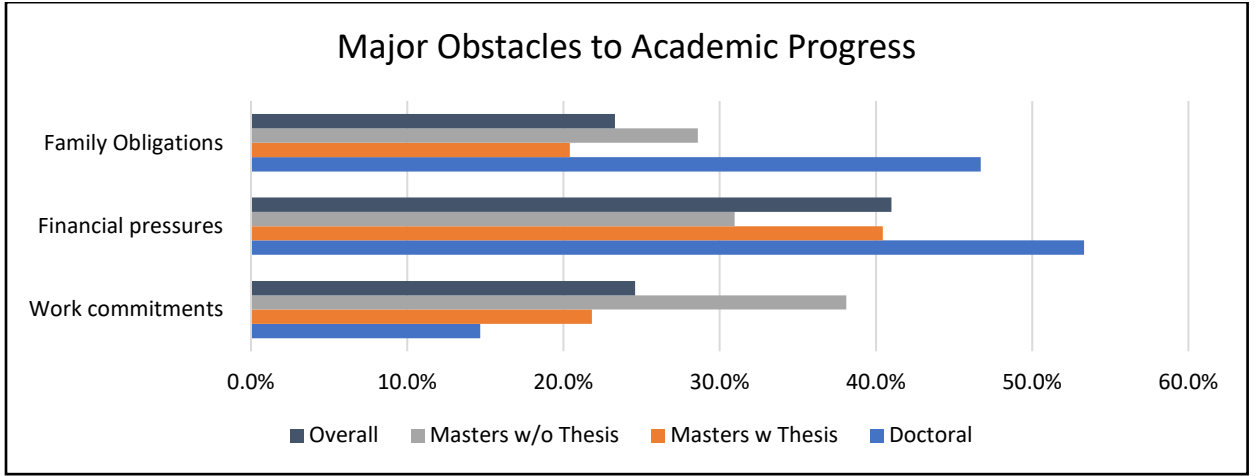
3) Your graduate/professional program at this university?



4) Your overall experience at this university?

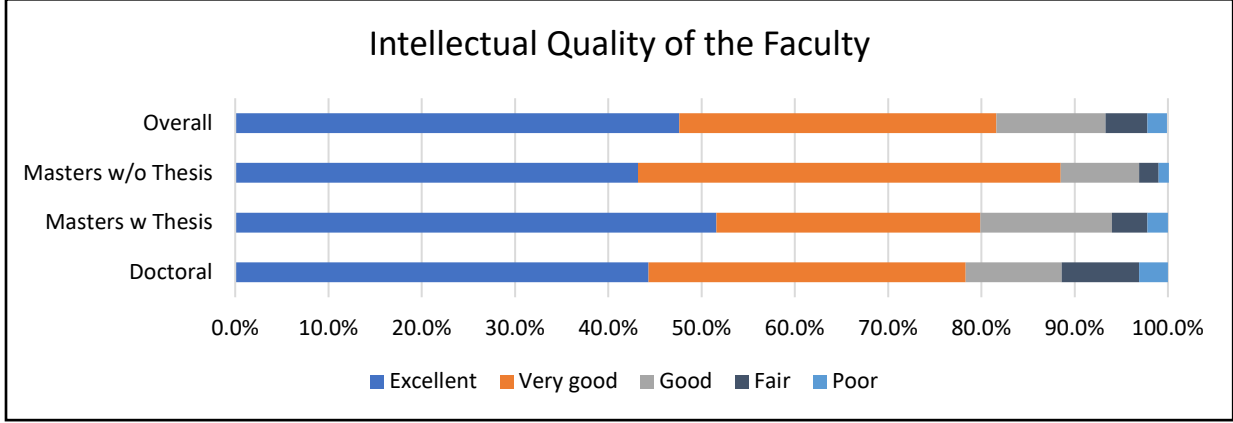


The extent to which the following factors are an obstacle to your academic progress:

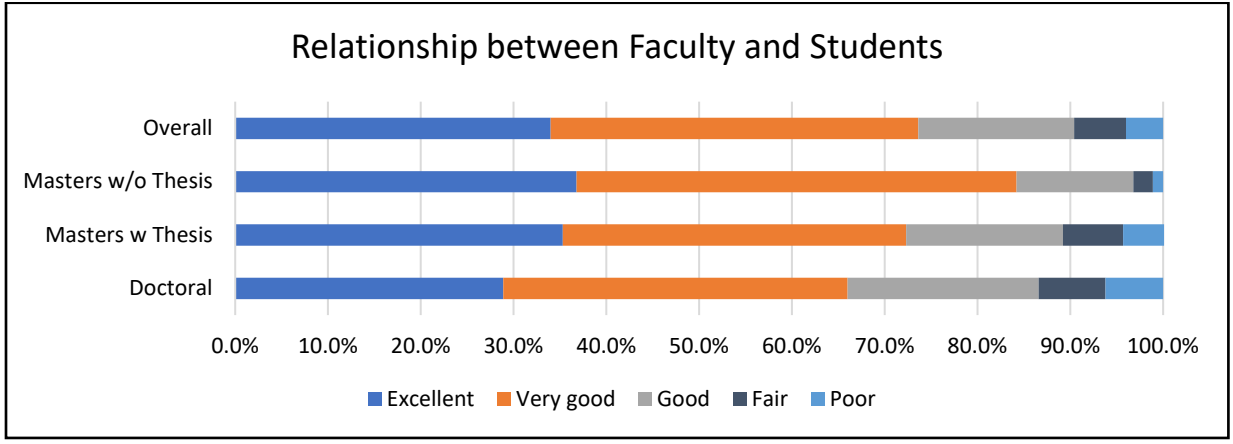


Section 4 – Program Satisfaction

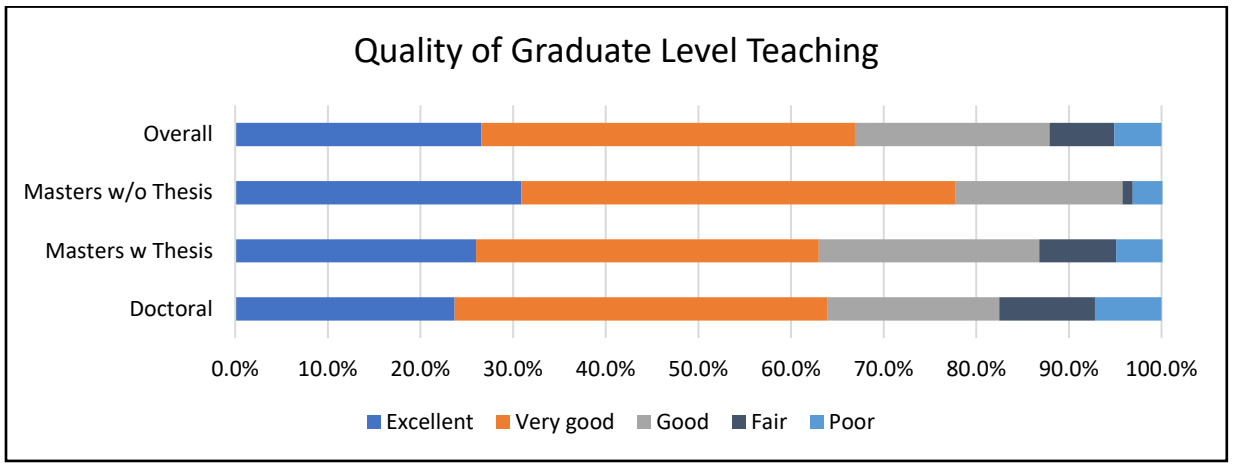
The intellectual quality of the faculty



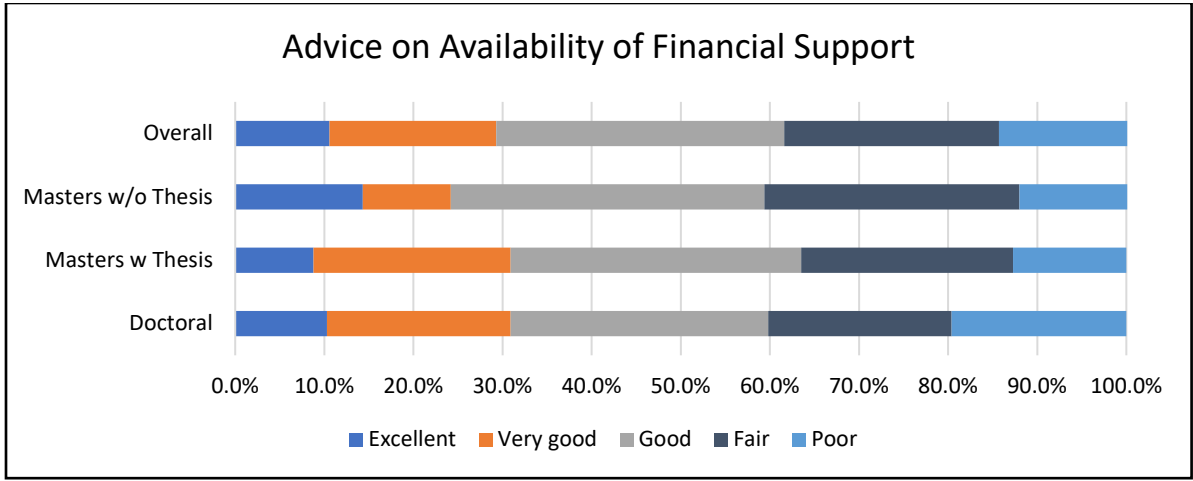
Relationship between Faculty and Students



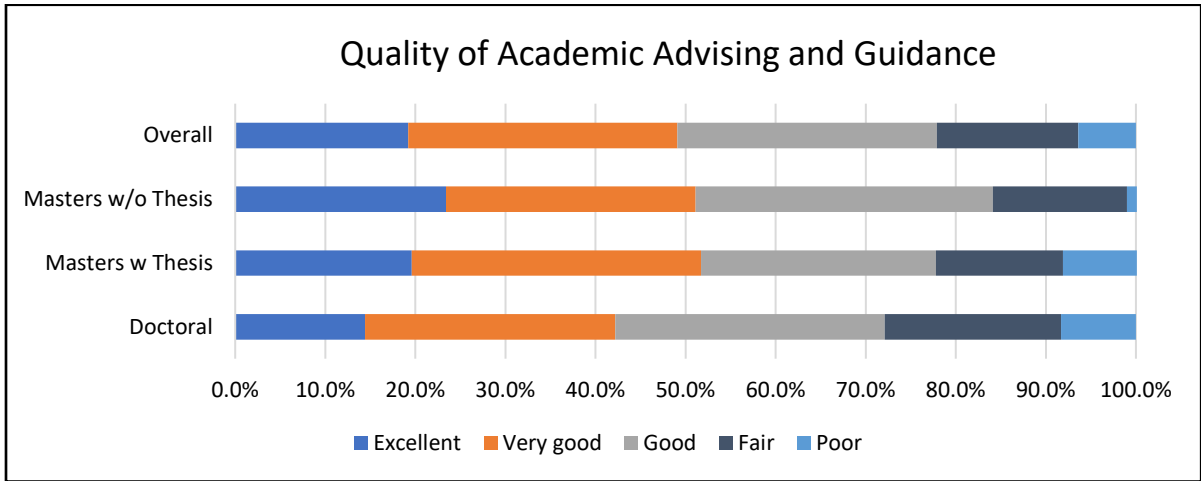
Quality of Graduate Level Teaching



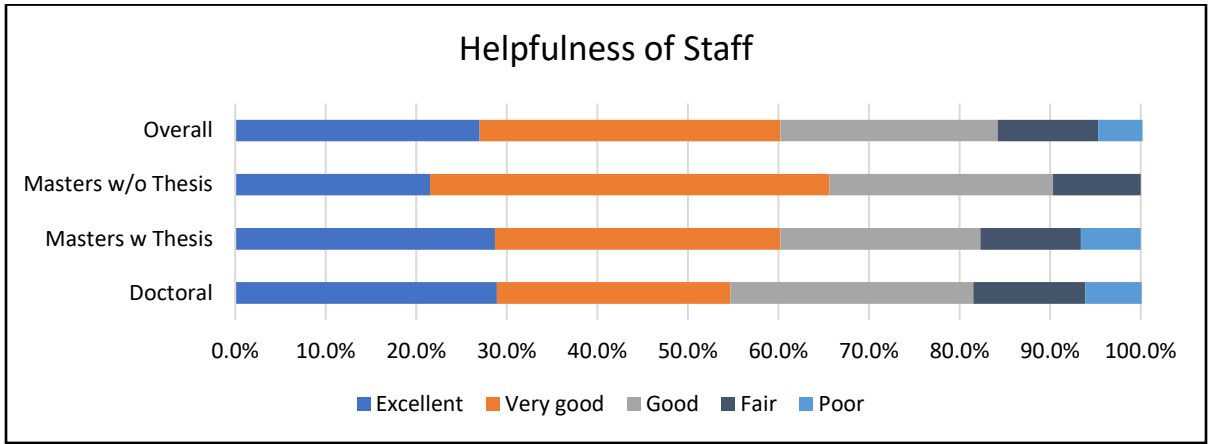
Advice on the availability of Financial Support



Quality of Academic Advising and Guidance

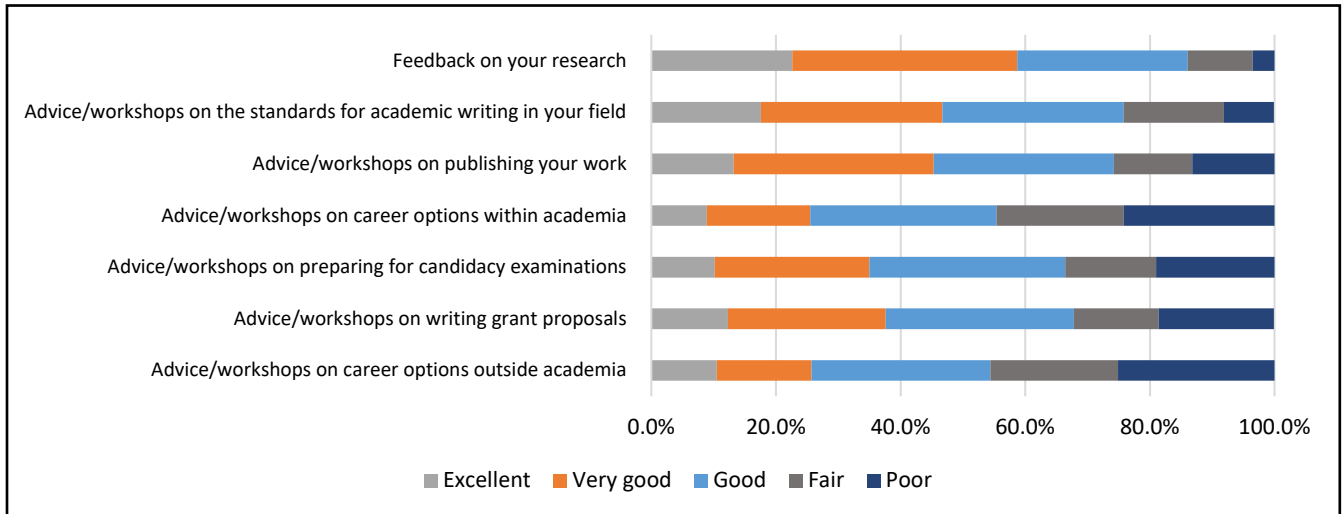


Helpfulness of Staff



Section 5 – Professional Skills Development

How would you rate the quality of the support and training you received in these areas? (Doctoral and Masters w Thesis only)

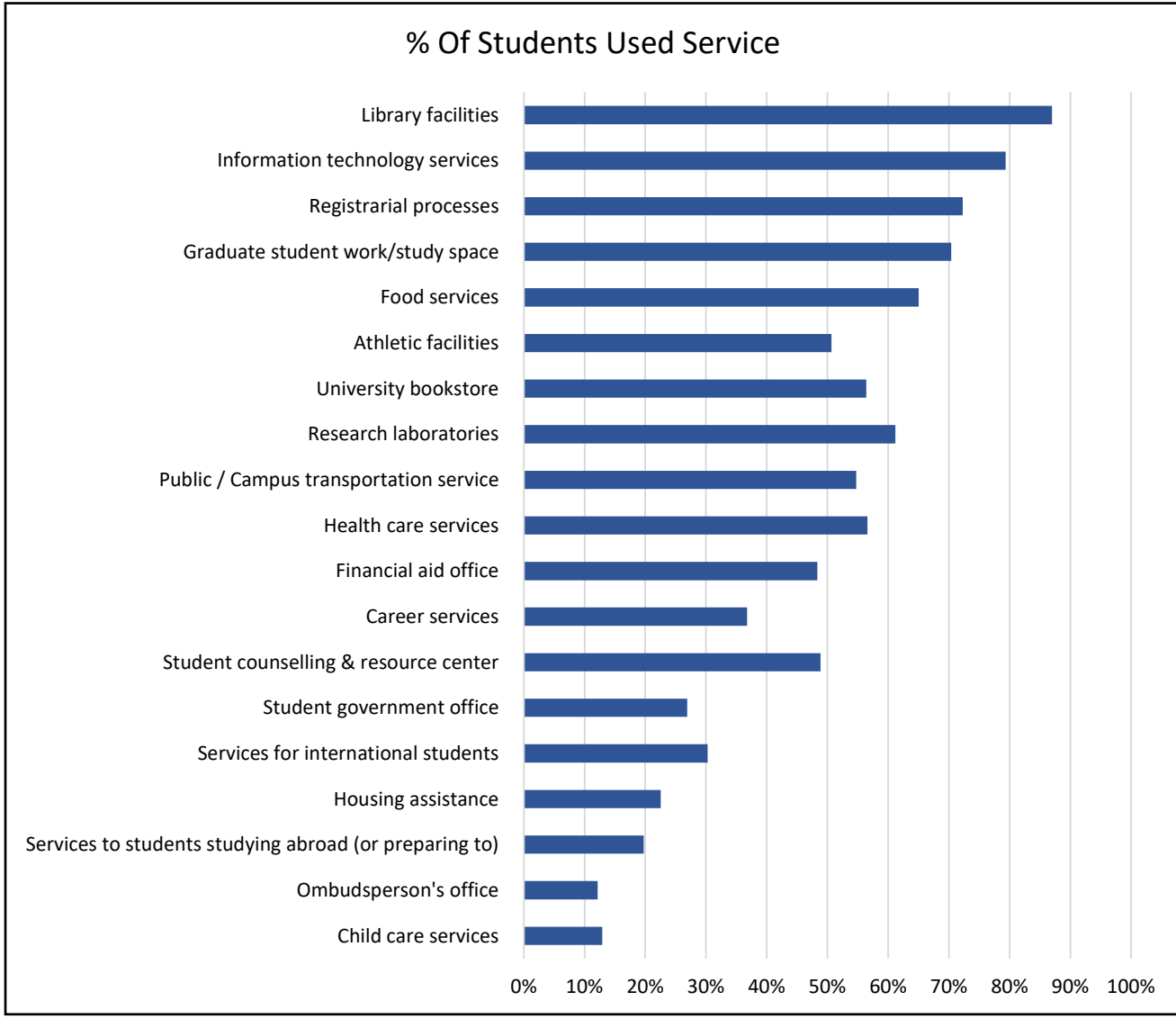


Section 6 – Financial

Estimated the amount of educational debt, if any, you will have to repay when you have completed your graduate degree here.

Debt	UG	GR
\$0	63.2%	43.9%
\$1 - \$9,999	5.9%	15.8%
\$10,000 - \$19,999	3.3%	17.5%
\$20,000 - \$29,999	6.6%	12.5%
\$30,000 - \$39,999	12.5%	4.3%
\$40,000 - \$49,999	5.2%	2.3%
\$50,000 - \$59,999	1.5%	1.7%
\$60,000 - \$69,999	0.4%	0.7%
\$70,000 - \$79,999	0.0%	0.3%
\$80,000 or more	1.5%	1.0%

Section 7 - University Resources



Please rate the following university resources based on the quality you have experienced while using them

